



Tomorrow's Doctors, Tomorrow's Cures

# End-User Innovation in CurrMIT (Curriculum Management and Information Tool

## Link CurrMIT and GQ Data

Hameed Ahmed  
Education Analyst  
April 10, 2010

---

Learn

---

Serve

---

Lead



Association of  
American Medical Colleges

# This session will cover

1. Review and analyze GQ data (Health Care Quality Improvement question)
2. Compare your school's response to the national response rate
3. Identify content in CurrMIT
4. Link CurrMIT and GQ data to identify trends.
5. Suggestions to improve response rate



# All Schools GQ data

**Do you believe that the time devoted to your instruction in the following areas was inadequate, appropriate, or excessive:**

**Health care quality improvement (Practice of Medicine)**

School	Year	Inadequate	Appropriate	Excessive	Count
All Schools	2006	30.6	68.1	1.3	11,409
All Schools	2007	31.6	67.6	0.8	12,522
All Schools	2008	29.9	69.2	0.9	13,156



# My School's GQ data

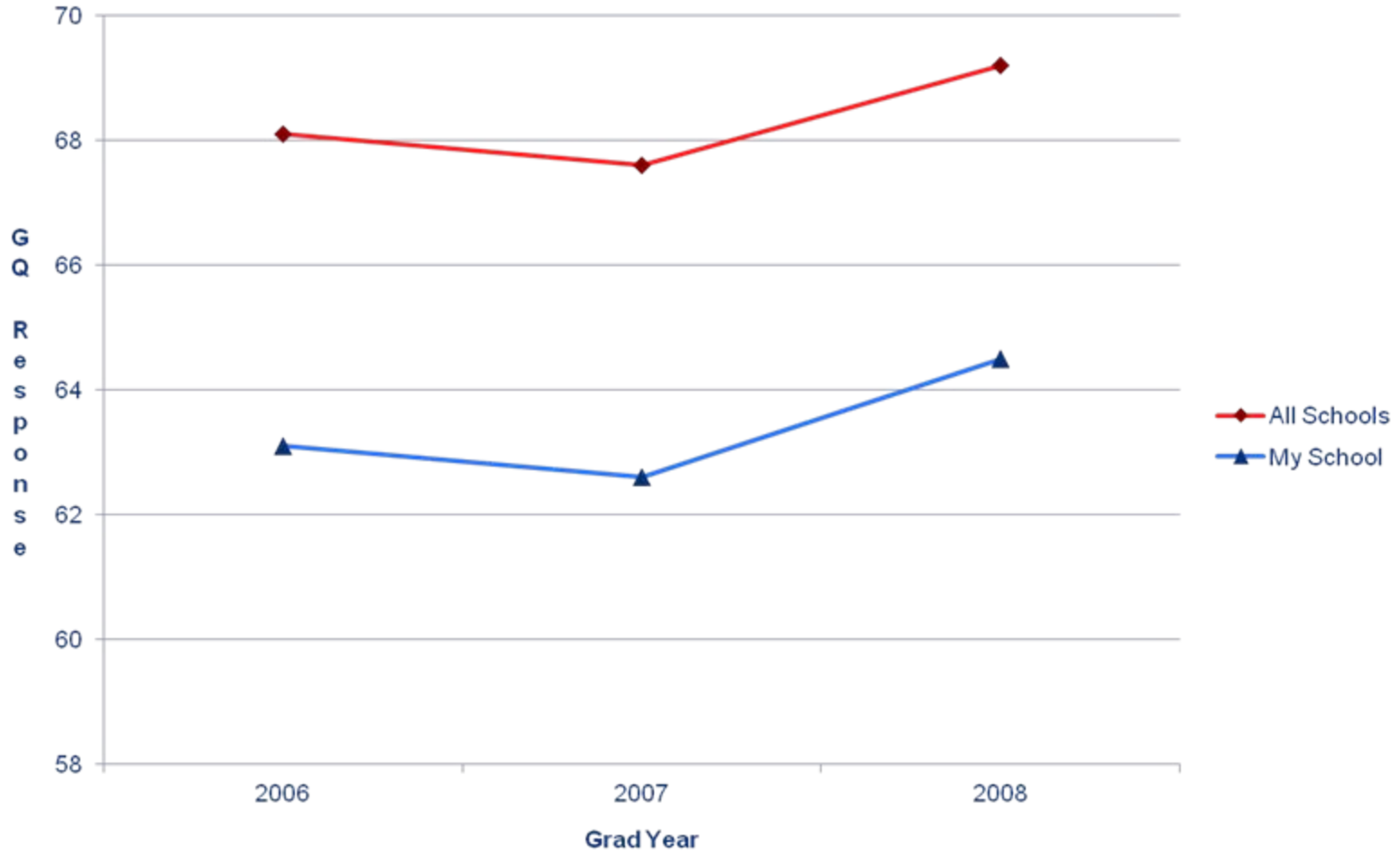
**Do you believe that the time devoted to your instruction in the following areas was inadequate, appropriate, or excessive:**

**Health care quality improvement (Practice of Medicine)**

School	Year	Inadequate	Appropriate	Excessive	Count
My School	2006	35.6	<b>63.1</b>	1.3	145
My School	2007	36.6	<b>62.6</b>	0.8	155
My School	2008	34.8	<b>64.5</b>	0.7	165



# Comparison of data.



**Student Responses to the Healthcare Quality improvement question: My School vs. All Schools**



# Question/Issue

*Are we teaching enough Healthcare Quality Improvement related content in our curriculum?*



# How to get the info

1. Call a few of your course directors, i.e. ask around
2. Survey all faculty members
3. Don't get any info; just ask the curriculum committee to increase QI content
4. Analyze curriculum to identify the trend in QI content. (e.g. curriculum database, CurrMIT)



# Quick Search in CurrMIT(example)

Curriculum Management & Information Tool  
**CurrMIT** AAMC

CurrMIT® is a program of the Association of American Medical Colleges

Curriculum Management | Curriculum Information | Administrator | Directory Wizard | Home | Profile | My Resources | Help | Logout

Existing Reports | Existing SQL Reports | Schematic Reports | Custom Reports | Calendar | Open SQL Reports | **Quick Search** | LCME Wizard

Options  
How Do I...  
Put together complex Search Criteria?  
Use Quick Search effectively?

### Quick Search

The search is case sensitive. You may search using Boolean connectors, but please limit the number of search strings to three. Example: inherited disorders OR gene AND NOT genera

**Search Details**

Select Institution [Redacted]

Enter Search Criteria

Select Graduation Year

**Search** **Reset**

Home | Curriculum Management | Curriculum Information | Admin | Help | Log Out **Top of Page**

CurrMIT is maintained by the Association of American Medical Colleges  
© copyright 1997-2004, AAMC | [Privacy Policy](#)



# Quick Search Results

Options

How Do I...

interpret or make sense of the report?

## Search Results

Found **146** matching record(s)

**Search String:** CQI OR patient safe OR improv AND ( quality OR perform )

Institution Name	Course Name	Grad Class Year	Academic Year	Session Name	Topics Covered	Course Option
	Y2-Clinical Skills V	2007	2		aa2010_health care <b>quality improvement</b>	Required
	Y2-Clinical Skills V	2007	2	G01 - LPCE Final Visit	aa2010_health care <b>quality improvement</b>	Required
	Y2PBL-Cardiovascular Disorders-4wks	2007	2		acgme competencies: 3. practice-based learning and <b>improvement</b> 1: analyze practice experience and <b>perform</b> practice-based <b>improvement</b> activities using a systematic methodology.	Required

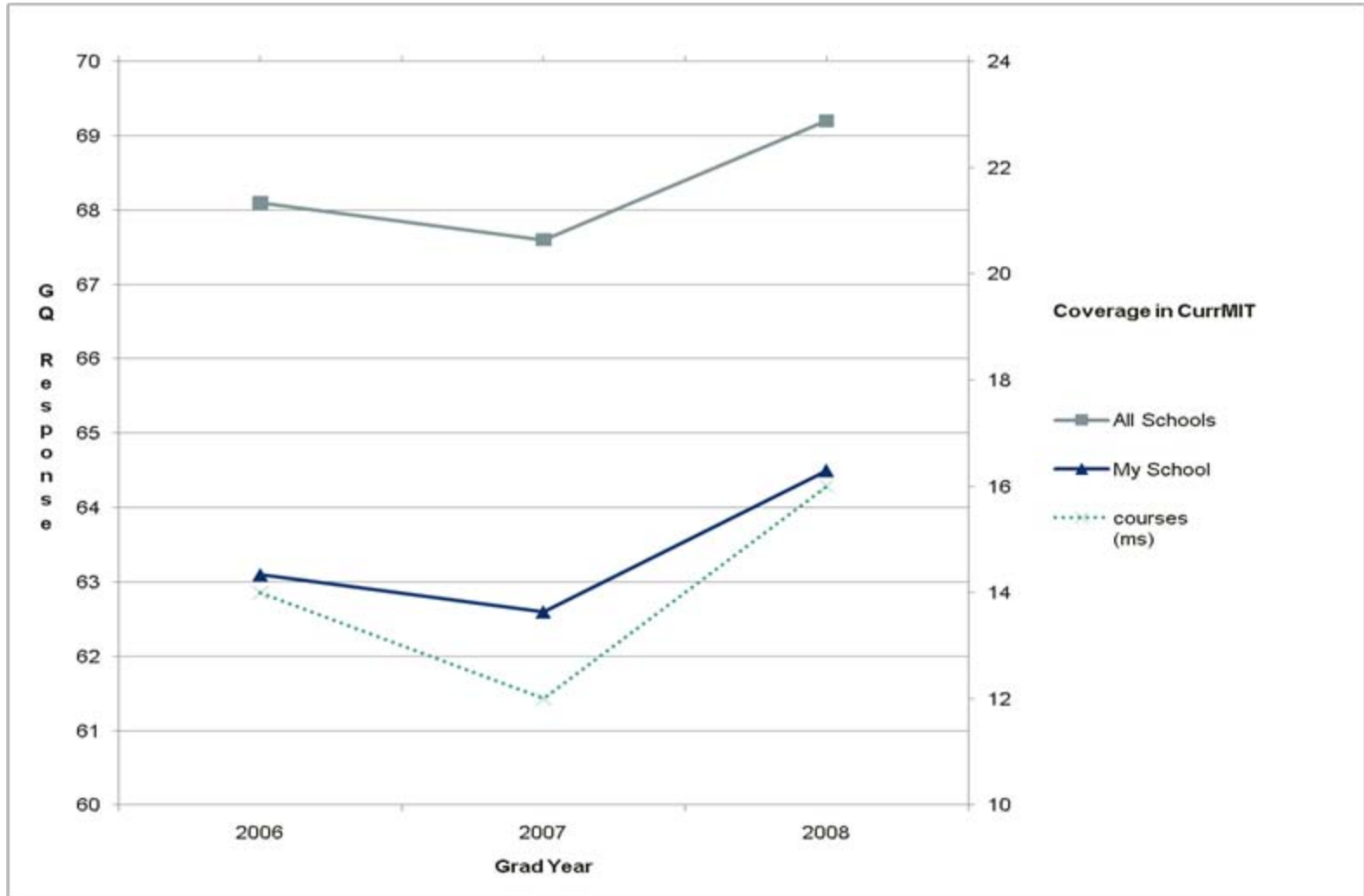


# QI Content at My School

Year	All Schools	My School	Courses (My School)
2006	68.1	63.1	14
2007	67.6	62.6	12
2008	69.2	64.5	16



# My GQ-CurrMIT Graph.



**Student Responses to the Healthcare Quality improvement question: My School vs. All Schools + Number of Courses in CurrMIT that cover QI**



# What can we do to improve responses?

- More courses/sessions
- Discuss curriculum and methodology with the faculty member
- QI is currently covered in M1 or M2 courses. It may need to be covered in M3 and M4

Grad Year	M1	M2	M3	M4	Total
2006	6	4	3	1	14
2007	6	3	3	0	12
2008	7	5	3	1	16



# What else can we do:

1. You can link to USMLE scores
2. Identify resources in MedEdPORTAL
3. Contact QI faculty (other schools) – available in CurrMIT
4. Identify national trends in CurrMIT

# Questions?



Tomorrow's Doctors, Tomorrow's Cures



---

Learn

---

Serve

---

Lead

Association of  
American Medical Colleges